

# Pole Mounted Battery Enclosure

The Hi-Lux pole mount series of enclosures are specifically designed for installation on poles to withstand vibrations, adverse weather conditions, vandalism and are designed to limit the damage encountered during a collision.

The pole mount battery enclosure will fit a battery of a maximum size of 340 x 230 x 175 mm ( W x H x D) with an optional shelf for a second battery. This is nominally designed for 100Ah batteries but different configurations and battery sizes can be accommodated.

Included is a gear tray that is suitable for the mounting of solar control equipment or small control systems.

## Features

- IP56 Rating
- Document Holder
- Flush Fitted Door With Two Lockable Rotary Draw Latches
- All welded seams
- Steel Battery Shelf



WHEN RELIABILITY MATTERS

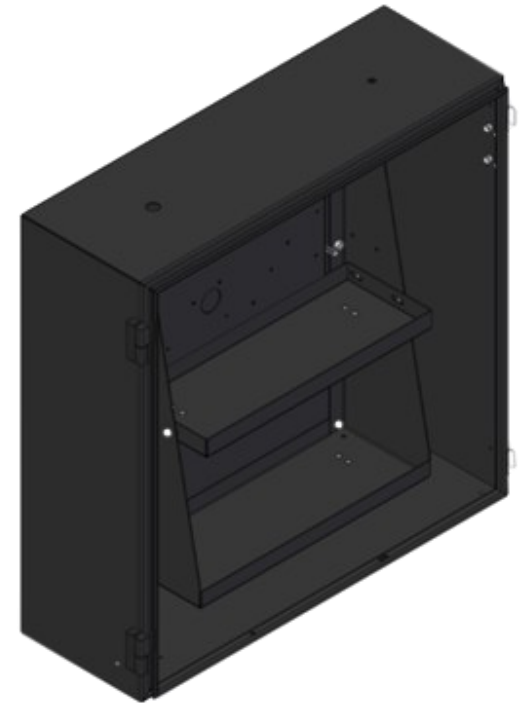
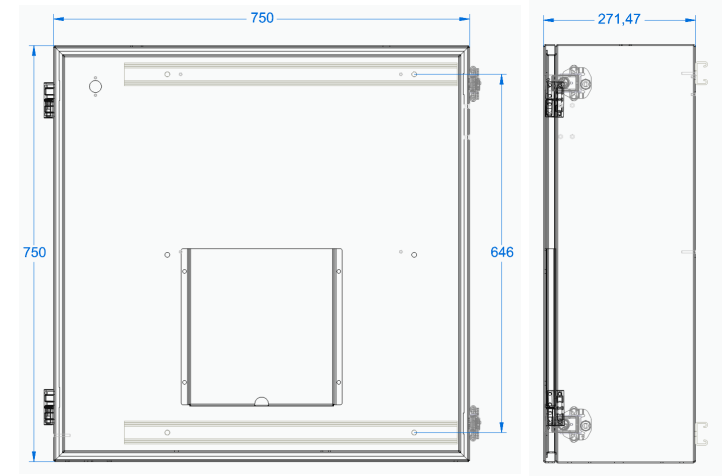
## Hi-Lux Technical Services

+61 3 9462 4633 | [sales@hlts.com.au](mailto:sales@hlts.com.au) | [hlts.com.au](http://hlts.com.au)



# Pole Mounted Enclosure

<b>Weight:</b>	20kg
<b>Dimensions:</b>	750 x 750 x 271
<b>Finish:</b>	Sable Black
<b>Mounting:</b>	Mounting Channel (P3000 Unistrut® or Compatible)
<b>Material:</b>	Enclosure and Door – 2.5mm marine grade aluminium Battery Carrier – Steel



## Specifications

